



RBI BEARING

Bearings + Technology + Solutions

**HARSH ENVIRONMENTS CALL FOR
RESILIENCE & RELIABILITY.**

**SPHERICAL ROLLER BEARING
SOLID BLOCK HOUSED UNITS**

www.rbibearing.com + 1-800-708-2128



DON'T LET BRUTAL APPLICATIONS KEEP YOU DOWN.



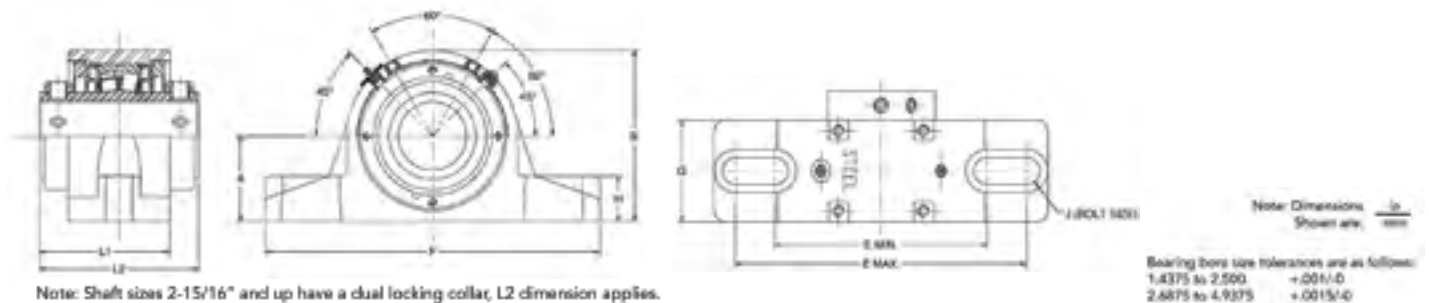
When you're up against harsh environments you need a resilient and reliable roller bearing housed unit that can stand up to tough conditions and keep your business operational. RBI Bearing's Spherical Roller Bearing Solid Block Housed Units will do just that. Our steel housed units can endure challenging environmental conditions, such as, impacts from aggregate, extreme temperatures, heavy load conditions and misalignment. RBI's solid housed units are also available with Armor Bearing Technology & Protection to reduce bearing friction and substantially increase bearing life. See Armor information on the back cover.

STANDARD FEATURES:

- Steel housing
- Powder coated housing (other coatings available)
- Field convertible from non-expansion to expansion (vice versa)
- Bearing insert pressed steel retainers
- Bearing rings & roller 52100 bearing steel
- Ulti-plex synthetic grease
- Teflon labyrinth seal
- Concentric locking collar
- Size range: 1-7/16" – 4-15/16"
- Bore sizes over 4" come with a double collar

BENEFITS:

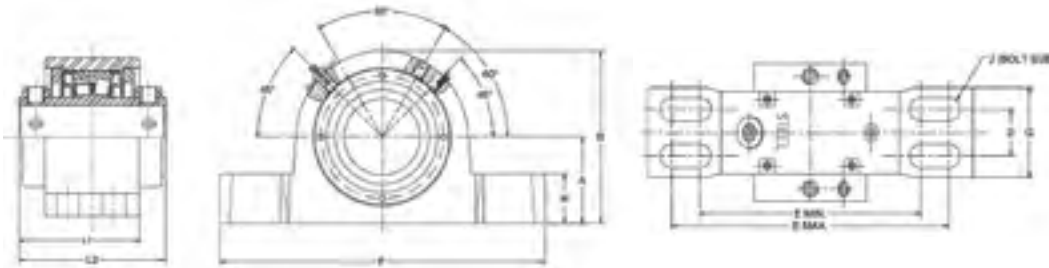
- Housing dimensions match both Type-E & traditional straight bore units
- Housings machined at each end for easier installation
- Interchangeable with most major brands
- High load capacity
- Resilient housing protects bearing
- Handles misalignment up to ± 1.5 degrees
- Purge relief valve
- Zerk fitting



TYPE E DIMENSIONS - 2 BOLT

All dimensions are inches.

Part Number	Bore Size	A	B	E (min)	E (max)	F	G	H	J (Bolt Size)	L1	Weight (LBS.)
E2P107	1.438	1.875	3.75	4.69	6.00	7.36	2.24	1.00	1/2	2.87	12
E2P115	1.938	2.250	4.50	6.00	7.25	8.86	2.24	1.22	5/8	3	14
E2P203	2.188	2.500	5.00	6.50	8.00	9.63	2.36	1.22	5/8	3.18	18
E2P207	2.438	2.750	5.50	6.88	8.74	10.24	2.80	1.38	5/8	3.52	23
E2P215	2.938	3.125	6.25	7.88	9.76	11.75	2.92	1.38	3/4	3.84	30
E2P307	3.438	3.750	7.50	9.38	11.50	13.74	3.50	1.85	7/8	4.03	45



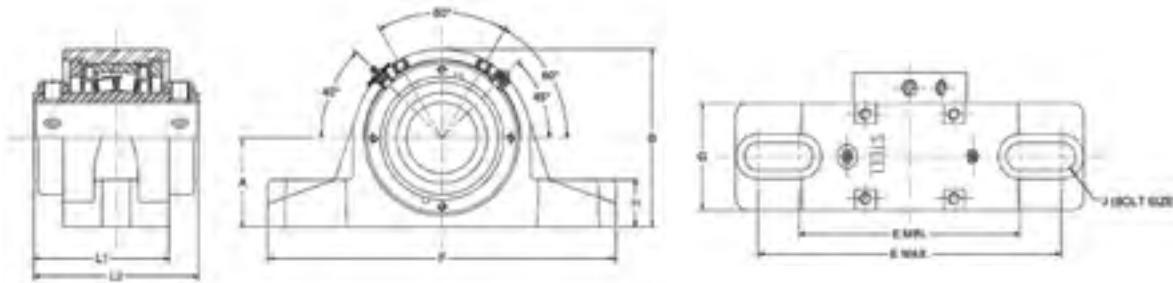
Note: Dimensions Shown are $\frac{in}{mm}$

Bearing bore size tolerances are as follows:
 1.4375 to 2.500 +.001/-0
 2.6875 to 4.9375 +.0015/-0

TYPE E DIMENSIONS - 4 BOLT

All dimensions are inches.

Part Number	Bore Size	A	B	D	E (min)	E (max)	F	G	H	J (Bolt Size)	L1	L2	Weight (LBS.)
E4P307	3.438	3.750	7.50	2.38	9.25	11.25	13.63	4.13	1.85	3/4	5.19	-	45
E4P315	3.938	4.250	8.50	2.25	10.88	13.39	14.88	4.33	2.00	3/4	5.94	-	60
E4P407D	4.438	4.750	9.70	2.50	11.83	14.50	16.13	4.72	2.00	3/4	-	6.13	90
E4P415D	4.938	5.500	10.98	2.76	15.13	15.88	17.50	5.12	2.00	7/8	-	6.63	90

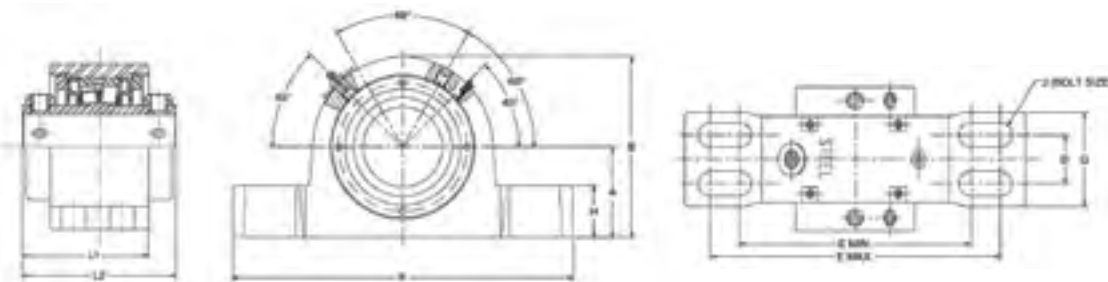


Note: Shaft sizes 2-15/16" and up have a dual locking collar; L2 dimension applies.

STRAIGHT BORE DIMENSIONS - 2 BOLT

All dimensions are inches.

Part Number	Bore Size	A	B	E (min)	E (max)	F	G	H	J (Bolt Size)	L1	Weight (LBS.)
T2P115	1.938	2.250	4.50	5.94	6.56	8.13	2.24	1.22	5/8	3.00	14
T2P203	2.188	2.500	5.00	6.50	7.06	8.87	2.36	1.22	5/8	3.18	18
T2P207	2.438	2.750	5.50	6.81	7.44	9.25	2.80	1.38	5/8	3.52	23
T2P215	2.938	3.250	6.37	7.72	8.43	10.44	2.92	1.38	3/4	3.62	30
T2P307	3.438	3.750	7.50	9.25	10.75	13.00	3.50	1.85	7/8	4.03	45



Note: Dimensions Shown are $\frac{in}{mm}$

Bearing bore size tolerances are as follows:
 1.4375 to 2.500 +.001/-0
 2.6875 to 4.9375 +.0015/-0

STRAIGHT BORE DIMENSIONS - 4 BOLT

All dimensions are inches.

Part Number	Bore Size	A	B	D	E (min)	E (max)	F	G	H	J (Bolt Size)	L1	L2	Weight (LBS.)
T4P307	3.438	3.750	7.50	1.97	8.88	10.88	12.30	3.74	1.85	3/4	5.19	-	45
T4P315	3.938	4.250	8.50	2.25	10.88	13.39	14.88	4.33	2.00	3/4	5.94	-	60
T4P407D	4.438	4.750	9.70	2.50	13.00	14.00	15.88	4.72	2.00	3/4	-	6.13	90
T4P415D	4.938	5.500	10.98	2.76	15.00	16.00	18.63	5.12	2.00	7/8	-	6.63	90

**MAKE THE RESILIENT AND RELIABLE CHOICE WITH
 RBI BEARING'S SPHERICAL ROLLER BEARING SOLID BLOCK HOUSED UNITS.
 CALL 1-800-708-2128 FOR MORE INFORMATION AND PRICING.**



ARMOR Nano Technology
ARMOR Long Lasting Lubrication
ARMOR Coated Protection

ARMOR BEARING TECHNOLOGY & PROTECTION

Armor Bearing Technology & Protection reduces bearing friction and substantially increase bearing life - which means less downtime and reduced repair costs.

- Significantly extend the bearings life
- Shields the bearing against harsh environments
- Saves time and operation costs
- Provides constant and consistent lubrication
- Preventing contamination ingress & corrosion
- Dramatically reducing shutdowns & the need for maintenance



RBI BEARING
Bearings + Technology + Solutions

SPHERICAL ROLLER BEARING SOLID BLOCK HOUSED UNITS

www.rbibearing.com + 1-800-708-2128

101 S. Gary Ave. Ste. B., Roselle, IL, 60172

