

The background of the advertisement is a photograph of a large industrial machine, likely a conveyor system. A prominent feature is a large, yellow-painted roller that is rotating, as indicated by the motion blur on its surface. A dark, heavy-duty belt is wrapped around the roller. Mounted on the side of the roller is a spherical roller bearing unit, which is a complex mechanical assembly with a blue-painted housing and a large, cylindrical roller. The entire unit is secured to a yellow metal frame. The scene is set in an industrial environment, with various structural elements and components visible in the background.

MOUNTED SPHERICAL UNITS FOR EXTREME ENVIRONMENTS

www.rbibearing.com + 1-800-708-2128

EXTREME ENVIRONMENTS NEED TOUGH BEARINGS.

MOUNTED SPHERICAL SOLID BLOCK UNITS & SPLIT BLOCK HOUSED UNITS.

When you're up against harsh environments, you need a resilient and reliable roller bearing housed unit that can stand up to tough conditions. RBI Bearing's line of Mounted Spherical Units are designed to withstand challenging environmental conditions, such as, impacts from aggregate, extreme temperatures, heavy load conditions and misalignment. Our Mounted Spherical Units are also available with Armor Bearing Technology & Protection to reduce bearing friction and substantially increase bearing life.

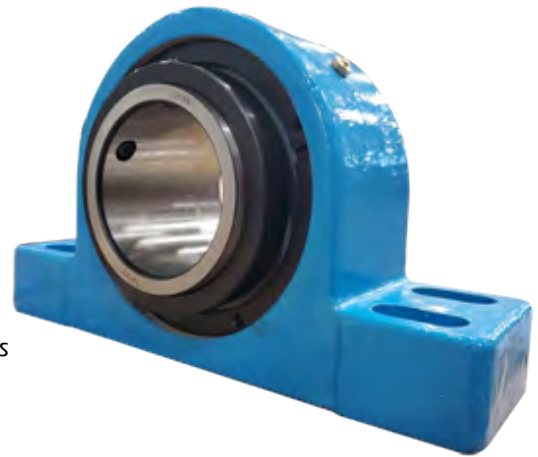


INDUSTRIES & APPLICATIONS:

Primary Metal	Material Conveying
Mining	Agriculture
Aggregate & Cement	Waste Management
Sawmills & Forestry	Waste Water Treatment
Pulp & Paper	Cranes, Lifts & Hoists

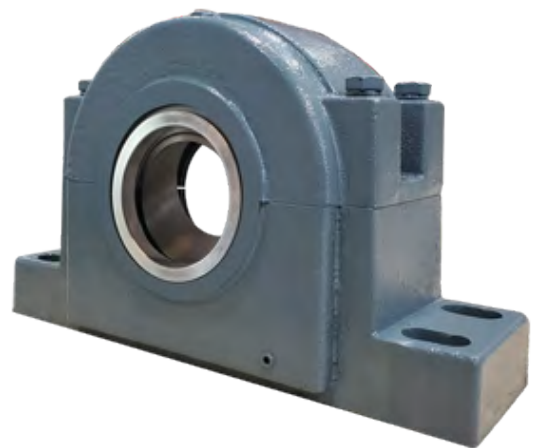
SPHERICAL ROLLER BEARING SOLID BLOCK HOUSED UNITS

- Steel housing
- Powder coated housing (other coatings available)
- Field convertible from non-expansion to expansion (vice versa)
- Bearing insert pressed steel retainers
- Bearing rings & roller 52100 bearing steel
- Ulti-plex synthetic grease
- Teflon labyrinth seal
- Concentric locking collar
- Size range: 1-15/16" – 4-15/16"
- Bore sizes over 4" come with a double collar
- Housing dimensions match both Type-E & traditional straight bore units
- Housings machined at each end for easier installation
- Interchangeable with most major brands
- Handles misalignment up to ± 1.5 degrees
- High load capacity
- Purge relief valve
- Zerk fitting



SPHERICAL ROLLER BEARING SPLIT BLOCK HOUSED UNITS

- Cast Iron
- 52100 bearing steel with Brass cage
- C3 clearance, oil groove & lube holes, other clearances available upon request
- Aluminum Seal
- HA adapter assembly consists of Sleeve, Nut & Washer and is interchangeable with SNW adapter assembly
- Pillow block assembly uses either 2 seals or 1 seal & 1 end cover
- Other sizes and dimensions available upon request

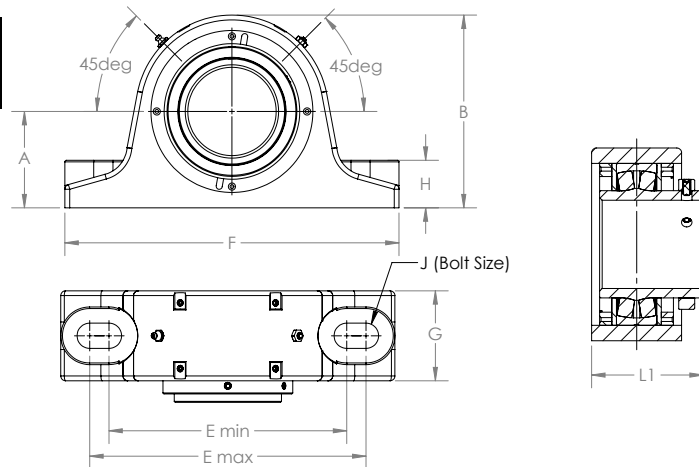
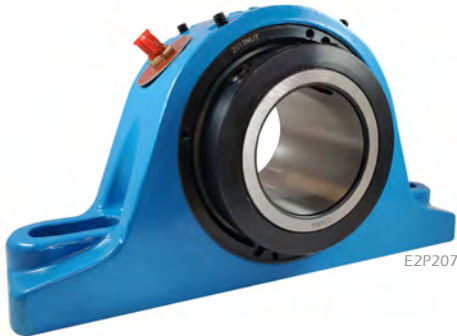


ALSO AVAILABLE WITH ARMOR BEARING TECHNOLOGY & PROTECTION.
CALL 1-800-708-2128 FOR MORE INFORMATION AND PRICING.



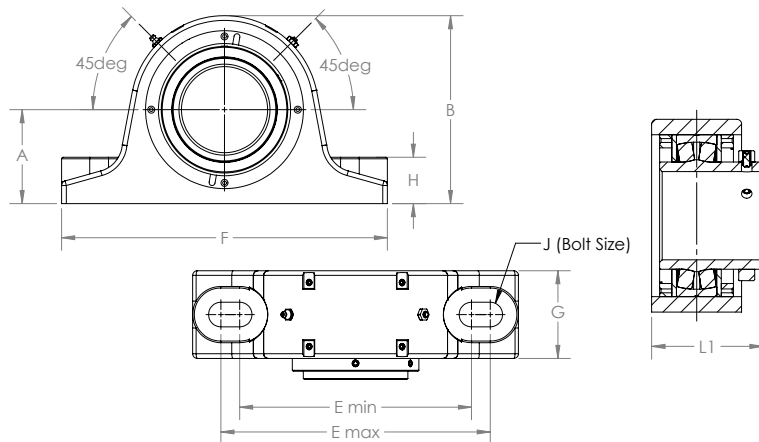
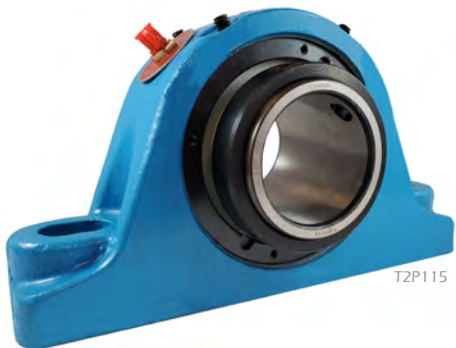
SPHERICAL ROLLER BEARING SOLID BLOCK HOUSED UNITS

TYPE E DIMENSIONS - 2 BOLT



Part Number	Bore Size	A	B	E (min)	E (max)	F	G	H	J (Bolt Size)	L1	Load Ratings (KN)			Weight (LBS.)
											Cor	Cr	rpm	
E2P115	1.938	2.250	4.50	6.00	7.25	8.86	2.24	1.22	5/8	3.00	104	102	3500	14
E2P203	2.188	2.500	5.00	6.50	8.00	9.63	2.36	1.22	5/8	3.18	126	123	3200	18
E2P207	2.437	2.750	5.50	6.88	8.74	10.24	2.80	1.38	5/8	3.52	215	188	2800	23
E2P215	2.938	3.125	6.25	7.88	9.76	11.75	2.92	1.38	3/4	3.84	238	206	2400	30
E2P307	3.438	3.750	7.50	9.38	11.50	13.74	3.50	1.85	7/8	4.34	372	318	2000	45

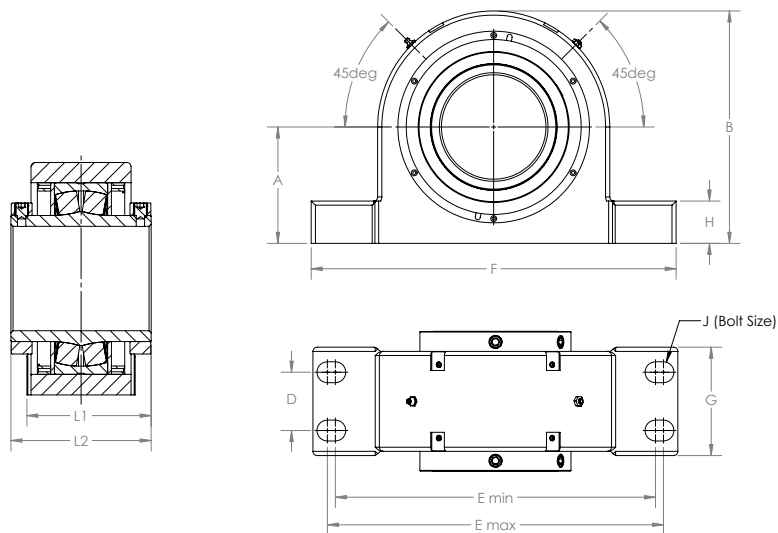
STRAIGHT BORE DIMENSIONS - 2 BOLT



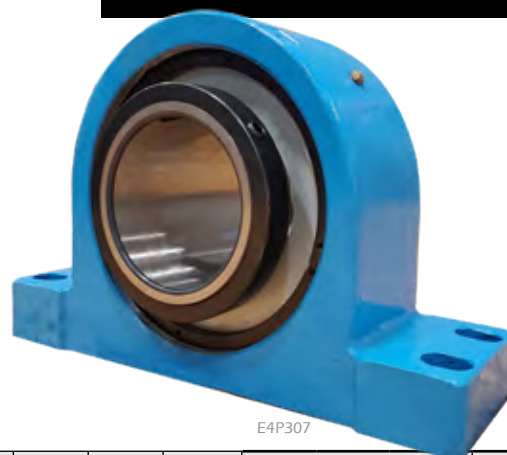
Part Number	Bore Size	A	B	E (min)	E (max)	F	G	H	J (Bolt Size)	L1	Load Ratings (KN)			Weight (LBS.)
											Cor	Cr	rpm	
T2P115	1.938	2.250	4.50	5.94	6.56	8.13	2.24	1.22	5/8	3.00	104	102	3500	14
T2P203	2.188	2.500	5.00	6.50	7.06	8.87	2.36	1.22	5/8	3.18	126	123	3200	18
T2P207	2.437	2.750	5.50	6.81	7.44	9.25	2.80	1.38	5/8	3.52	215	188	2800	23
T2P215	2.938	3.250	6.37	7.72	8.43	10.44	2.92	1.38	3/4	3.84	238	206	2400	30
T2P307	3.438	3.750	7.50	9.25	10.75	13.00	3.50	1.85	7/8	4.34	372	318	2000	45

ALSO AVAILABLE WITH ARMOR BEARING TECHNOLOGY & PROTECTION.
CALL 1-800-708-2128 FOR MORE INFORMATION AND PRICING.



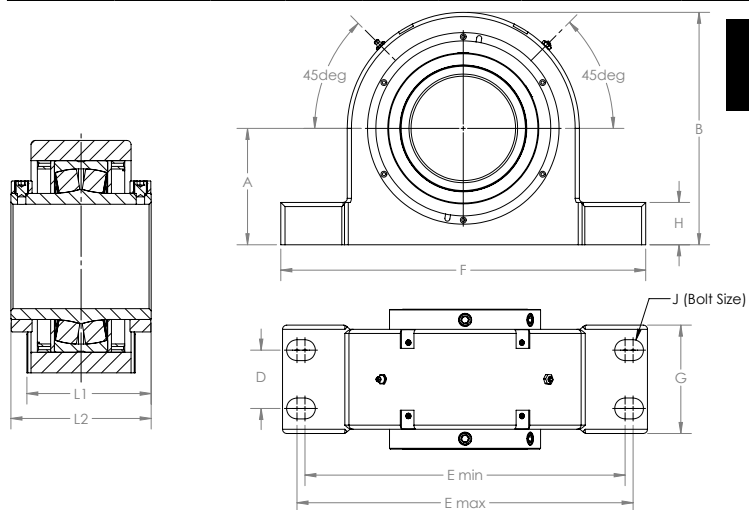


TYPE E DIMENSIONS - 4 BOLT



E4P307

Part Number	Bore Size	A	B	D	E (min)	E (max)	F	G	H	J (Bolt Size)	L1	L2	Load Ratings (KN)			Weight (LBS.)
													Cor	Cr	rpm	
E4P307	3.438	3.750	7.50	2.38	9.25	11.25	13.63	4.13	1.85	3/4	5.19	-	372	318	2000	45
E4P315	3.938	4.250	8.50	2.25	10.88	13.39	14.88	4.33	2.00	3/4	5.94	-	486	399	1600	60
E4P407D	4.438	4.750	9.70	2.50	11.83	14.50	16.13	4.72	2.00	3/4	-	6.13	651	510	1200	90
E4P415D	4.938	5.500	10.98	2.76	15.13	15.88	17.50	5.12	2.00	7/8	-	6.63	896	660	1000	90



STRAIGHT BORE DIMENSIONS - 4 BOLT



T4P307

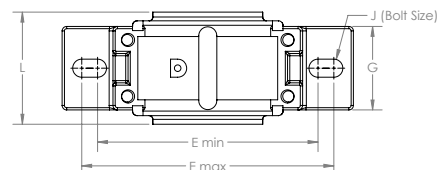
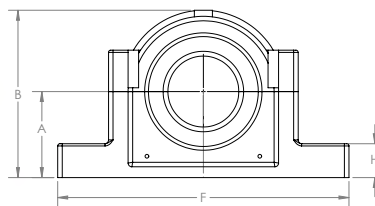
Part Number	Bore Size	A	B	D	E (min)	E (max)	F	G	H	J (Bolt Size)	L1	L2	Load Ratings (KN)			Weight (LBS.)
													Cor	Cr	rpm	
T4P307	3.438	3.750	7.50	1.97	9.13	10.95	13.00	3.74	1.85	3/4	4.46	-	372	318	2000	45
T4P315	3.938	4.250	8.50	2.25	10.88	13.39	14.88	4.33	2.00	3/4	5.13	-	486	399	1600	60
T4P407D	4.438	4.750	9.70	2.50	11.22	14.00	16.13	4.72	2.00	3/4	-	6.13	651	510	1200	90
T4P415D	4.938	5.500	10.98	2.76	15.13	15.88	17.24	5.12	2.00	7/8	-	6.63	896	660	1000	90

ALSO AVAILABLE WITH ARMOR BEARING TECHNOLOGY & PROTECTION.
CALL 1-800-708-2128 FOR MORE INFORMATION AND PRICING.



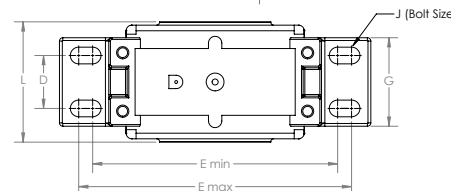
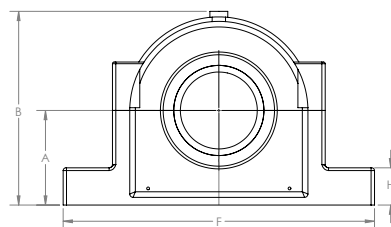
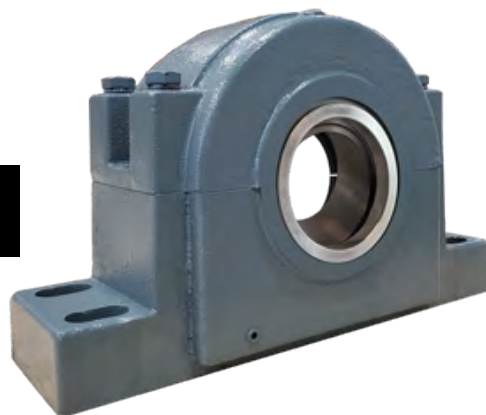
SPHERICAL ROLLER BEARING SPLIT BLOCK HOUSED UNITS

SAF - 2 BOLT



Part Number	Shaft Diameter	A	B	D	E (min)	E (max)	F	G	H	J (Bolt Size)	L	Load Ratings (KN)		rpm	
												Cr	Cor	Grease	Oil
SAF517	2-15/16	3.75	7.32	-	9.88	10.98	12.99	3.50	1.26	3/4" (2)	5.00	256	330	3100	3900
SAF520	3-7/16	4.50	8.74	-	11.61	13.11	15.24	4.37	1.77	1" (2)	5.98	361.9	478.9	2600	3200
2-BOLT HOUSING PART NO.		SPHERICAL ROLLER BEARING P/N		ADAPTER ASSEMBLY P/N		SEAL P/N		END COVER P/N		STABILIZING RING P/N		PILLOW BLOCK ASSEMBLY P/N			
SAF517		22217CAKW33C3		HA317_2-15/16"		LER 53		A517		SR-17-14		SAF 22517			
SAF520		22220CAKW33C3		HA320_3-7/16"		LER 102		A520		SR-20-17		SAF 22520			

FSAF - 4 BOLT



Part Number	Shaft Diameter	A	B	D	E (min)	E (max)	F	G	H	J (Bolt Size)	L	Load Ratings (kN)		rpm	
												Cr	Cor	Grease	Oil
FSAF522	3-15/16	4.94	9.65	2.75	12.64	14.49	16.50	4.76	2.01	3/4" (4)	6.50	463	651	2400	3000
FSAF526	4-7/16	6.00	11.50	3.25	14.65	15.98	18.39	5.12	2.40	1" (4)	7.99	625	896	2000	2600
FSAF528	4-15/16	6.00	11.73	3.38	15.98	17.13	20.12	5.87	2.40	1" (4)	7.64	720	990	1900	2400
FSAF532	5-7/16	6.69	13.31	3.75	17.40	19.25	22.01	6.26	2.64	1" (4)	8.74	915.7	1289	1700	1900
4-BOLT HOUSING PART NO.		SPHERICAL ROLLER BEARING P/N		ADAPTER ASSEMBLY P/N		SEAL P/N		END COVER P/N		STABILIZING RING P/N		PILLOW BLOCK ASSEMBLY P/N			
FSAF522		22222CAKW33C3		HA322_3-15/16"		LER 109		A522		SR-22-19		FSAF 22522			
FSAF526		22226CAKW33C3		HA3126_4-7/16"		LER 117		A526		SR-26-0		FSAF 22526			
FSAF528		22228CAKW33C3		HA3128_4-15/16"		LER 122		A528		SR-28-0		FSAF 22528			
FSAF532		22232CAKW33C3		HA3132_5-7/16"		LER 130		A532		SR-32-0		FSAF 22532			

ALSO AVAILABLE WITH ARMOR BEARING TECHNOLOGY & PROTECTION.
CALL 1-800-708-2128 FOR MORE INFORMATION AND PRICING.





Should I lubricate my Mounted Roller Bearings?

YES!



But, how you choose to grease your bearings is an important decision. It's estimated that 55% of mounted bearings fail because of lubrication problems and another 25% fail due to contamination issues. Grease purge from bearings also create safety hazards such as slips and falls, increases the risk of fires and can be considered a hazardous material. The conventional daily greasing of bearings is also a major expense, costing as much as 5X the initial cost of the bearing!

RBI Bearing has a simple solution to make your choice easy. **Armor Bearing Permanent Lubrication** - this treatment provides a permanent Polymer lubrication to the bearing that creates extra protection against contamination ingress and saves time and operation costs.



- Extends the life of your bearings by providing constant and consistent lubrication at all times
- Eliminates hazards
- No need to climb, plumb, or put an employee at risk in order to grease bearings
- No hazardous material concerns
- Helps block debris and reduce foreign contamination
- Operates in temperatures up to 350°
- Reduces equipment maintenance costs
- Does not drip out of the bearing and contaminate the environment
- Does not alter the dimensional tolerances of the bearing
- Environmentally friendly

OTHER ARMOR BEARING TECHNOLOGY AND PROTECTION SOLUTIONS:

Armor Nano Technology - a unique Nano technology treatment proven to reduce metal to metal friction by up to 99% and greatly extend bearing life.

Armor Coated Protection (an Enviropeel Technology) - A UV-resistant thermoplastic polymer bearing shield installed by the end user or a spray application of the thermoplastic material applied on site by a trained technician. Prolongs bearing life by up to 500%.

All Armor Bearing Technology & Protection solutions have been proven to increase bearing life and drastically reduce shutdown and the need for maintenance.

***CALL 1-800-708-2128 OR EMAIL INFO@RBIBEARING.COM
FOR MORE INFORMATION AND PRICING.***



CORE PRODUCTS

- Ball Bearings
- Angular Contact Bearings
- Tapered Roller Bearings
- Spherical Roller Bearings
- Cylindrical Roller Bearings
- Insert Bearings
- Mounted Units
- Stainless Steel & Thermoplastic Mounted Units
- Spherical Roller Mounted Units
- Armor Bearing Technology & Protection

RBI BEARING, INC.

101 S. Gary Ave., Ste B., Roselle, IL 60172
1-800-708-2128 | www.rbibearing.com